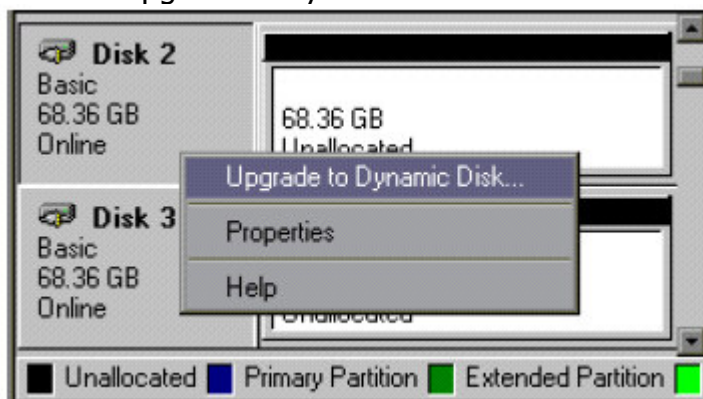


How to stripe drives with Windows 2000:

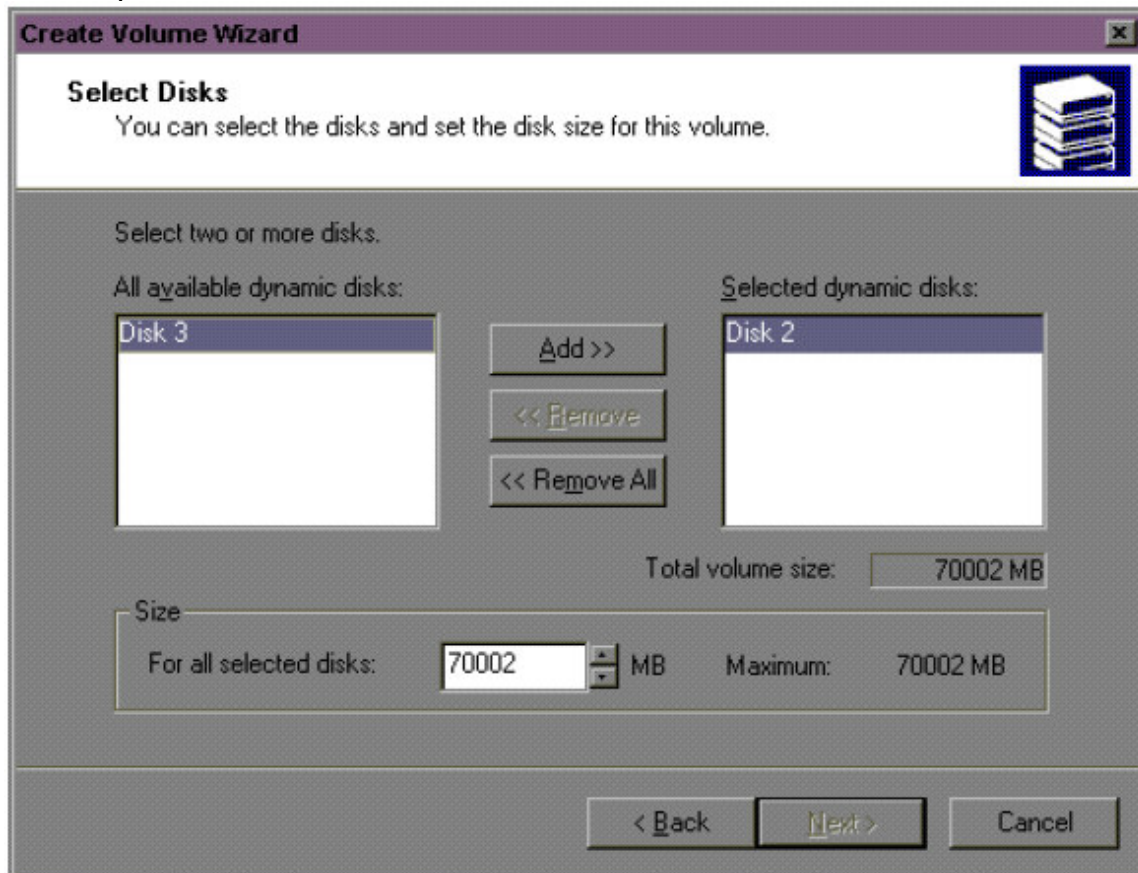
This Tip/Technique applies to the following Avid product(s): *Avid Xpress NT, Film Composer NT, Media Composer NT, Media Station XL, NewsCutter, Symphony*

- make sure, that you have Administrator privileges
- open the Computer Management
- Select "Storage"
- open the "Disk Management"
- right click on one of the disks, you want to include in your stripe set and choose "Upgrade to dynamic Disk"



- This can be done in the "Disk List"-View or in the "Graphical View". To get the "Upgrade to Dynamic Disk..." Option in the "Graphical View", you need to do the right click in the left part of the Window, where it says: Disk x, Basic, x GB, Online (see "upgrade to.bmp"). To change the View, go to the "View" Menu and choose to change "Top" or "Bottom".
- in the "Upgrade to Dynamic Disk"-Window choose all the disks you want to include in your stripe set and click "OK". The drives are now upgrade to dynamic drives and the drives now appear as "Unallocated" with a black top bar in the "Graphical View".
 - Now: right click on one of the dynamic disks that should be part of your stripe set and choose "Create Volume" from the drop down Menu. This again can be done in the "Graphical View" or in the "Disk List" View.
 - the "Create Volume"-Wizard opens, choose "next" on the first window.
 - On the "Select Volume Type"-Window select "Striped Volume" and click on "next"
 - On the "Select Disks"-Window add all the drives, you want to have as part of the stripe set. In the "all available dynamic disks" section of the window, highlight the drive you want to add to your stripe set and click "Add". In the "Size"-Part of the "Select Disks" Window you can choose the size of the volume, just in case, you want to have more than one

volume in your stripe set (not sure what volume means here? it is the "partition" on a dynamic disk...). The default is, that the stripe set contains only one volume (See "Select Disk".bmp) Click "next" when your options are set.



- In the "Assign drive letter or path"-Window, assign a drive letter and click "next"
- choose to format the Volume in the "Format Volume" Window, NTFS is recommended for Media Drives. The "perform a quick format" option is also part of that Window and a "Volume Label" can also be set here. Click "next" after choosing your format options
- confirm your setting on the "Completing the create volume wizard" Window and click "Finish". In the "Graphical View" you now see, that Disk Management is formatting the drives. If formatting is finished successfully, the drives appear as healthy.

The good news:

With Windows 2000 it is possible to move stripe-sets created under Windows 2000 from one Windows 2000 system to another. No disk mounter needed and no saving of the disk configuration involved.

7/07/2004